

BMS Dissection Training

Marianne McIntosh

Trainee Advanced Practitioner

QEUH

Glasgow.

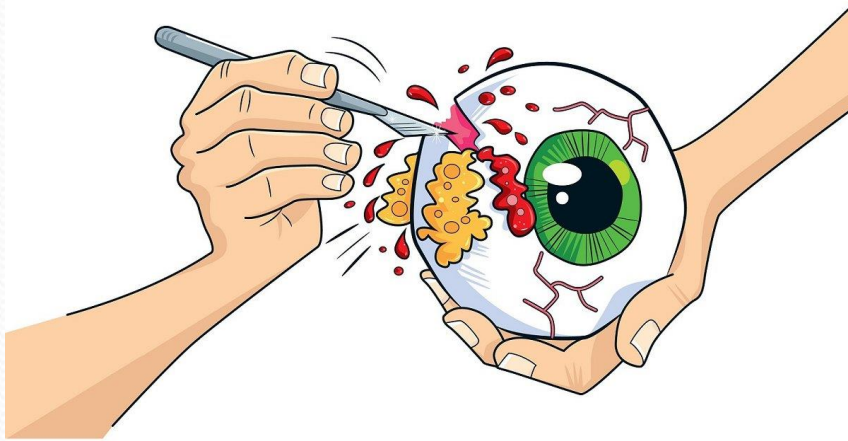
Presented today by Ms Norma McKay

My training in the olden days



- When BMS dissection was new....
- RCPATH had only just approved BMS dissection alongside IBMS

One of our consultants enquired if anyone would be interested in helping the department's Consulting staff by learning how to dissect.



- This would be to free up more time for Consultant reporting.
- The overall opinion within the department at that time was... Why would a BMS offer to take on the responsibility for no extra monetary gain?
- So I was alone in my volunteering.

In the beginning there was Crosshouse Hospital.



- Agreed training procedures had been established and carried out in accordance to the RCPATH/IBMS.
- Vanda McTaggart, Senior BMS dissector at Crosshouse Hospital

Off to learn new things....



- Spent several weeks travelling up and down to Crosshouse to shadow Vanda every day.

Steep learning curve.

- The dissection process was demonstrated and then carried out by myself under direct supervision.
- The SOP layout, and the paper log of all specimens handled and dissected.
- The specimen and slide review procedures also.

Back at home laboratory.



© Can Stock Photo - csp10410310

- My training took place outside of my normal work hours in my own time.
- When the consultant was available usually for 1 to 2 hrs at the end of the day.
- I was also expected initially to fit my dissection sessions around all of my existing BMS duties.
- That was great fun....

I was hooked on learning

- I carried out a lot of background reading on each new specimen type at home.
- I learned the importance of understanding relevant clinical history.
- I also learned the importance of knowing when to check the clinical history myself prior to dissection, as not all useful information is supplied, if it doesn't add up..check.
- Our Department at Paisley went on to train 2 more BMS dissection staff, one of which was my current counterpart Layla Goodings.
- The department started allocating set BMS dissection slots.

Merge of several hospitals 2012



- There were multiple BMS dissectors across greater Glasgow and Clyde at this time.
- All with their own methods and SOP's.

All documentation had to be assessed

- The SOP's had to conform with RCPath reporting datasets for each specimen type.
- The SOP's had to be agreed on by all consulting staff.
- Ideally, all specimens to be dissected in the same way, BMS, trainee and Pathologist.

After the merger;

- Specimen numbers continued to increase.
- Overall pathologist numbers within departments decreased.
- Increased stress on pathologists to fit dissection and reporting into the set number of hours in a week.
- All existing BMS dissection staff had to be trained and signed off as competent in the new SOP's.
- The volume of B & C specimens coming through the department was now too much for the existing pool of BMS dissection staff.

Decision to expand BMS dissection numbers within the QEUH pathology department.

- Staff were invited to apply for dissection training.
- There was a good response from staff.
- After an initial assessment and some basic training a few staff were selected to be initially trained by the pathologist staff.
- The training was to be scheduled and included in the day to day duties.

Scottish Pathology Network.

- Aim to implement BMS histological dissection to all departments in Scotland.
- National training school to provide initial training.
- Conditions of consideration included an agreement to incorporate the continued training of applicants via a sponsor Pathologist. This had to be done with a set number of hours training per week. The aim was to have BMS dissectors dealing with Cat B & C high volume specimens, This should free up reporting time for pathologists.

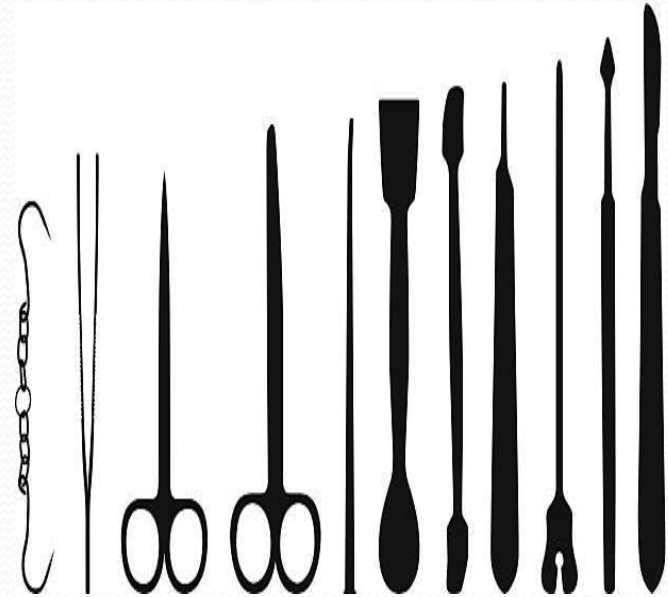
Dissection school from 2018

- Introduction to paperwork lectures.
- Introduction to specimen type lectures prior to hands on experience.



Hands on experience

- Starts with knife handling and bench work procedures.
- The importance of a set handling procedure at the bench.
- Discussing carry over and mix up prevention.



Bench work experience

- All candidates are given sessions within the busy Queen Elizabeth Pathology dissection area at designated benches.
- We found 2 groups of 4 to be manageable with in time restraints.



Specially prepared dissection experience

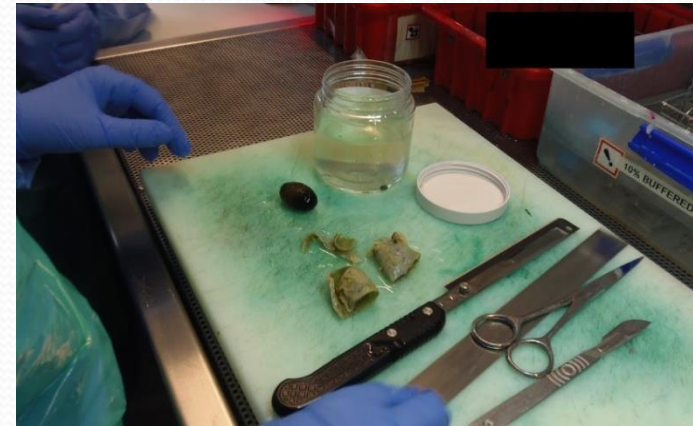
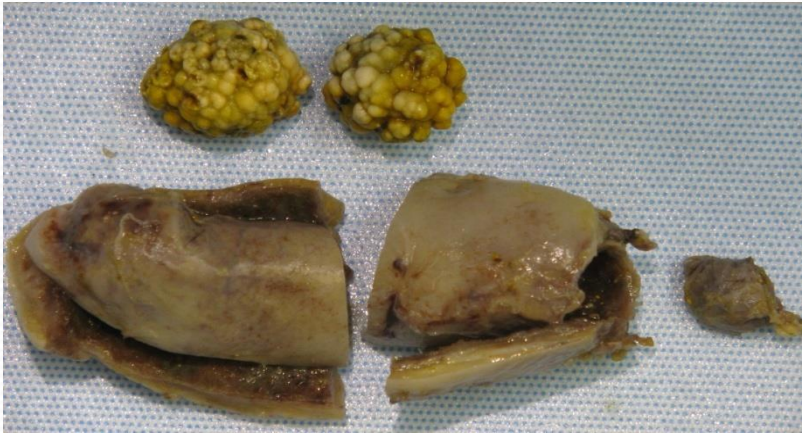
- A range of specimens and simulated specimens each day for hands on experience.
- Both Layla and myself spent several days setting up specimens and collecting others.



Simulated specimens can you guess?



Real specimens reported and ready for disposal that can be reassembled



Brief presentations explaining career advancement options.

- **Day to day as a BMS dissector by Marianne McIntosh**
- **IBMS DEP in histological dissection: An overview by Layla Goodings**



And I'm done..

- Thank you for your attention today.
- Any questions??

